

Wheelchair Users Lavatory

FEATURES

- 20-1/2" x 27"
- Vitreous china
- ADA compliant
- Punching for concealed arm carrier
- No hardware included

MODELS

- LT308
Lavatory only, with single hole
- LT308.4
Lavatory only with 4" faucet centers
- LT308.11
Lavatory only with 11" faucet centers
- LT308A
Lavatory only with single hole. Right side soap hole
- LT308.4A
Lavatory only with 4" faucet centers. Right side soap hole
- LT308.11A
Lavatory only with 11" faucet centers. Right side soap hole.

COLORS/FINISHES

- Standard
#01 Cotton

PRODUCT SPECIFICATION

The wall-mount lavatory shall be made of vitreous china. Lavatory shall be 20-1/2" in length and 27" in width. Product shall be with front overflow. Lavatory shall be ADA compliant. Lavatory shall be TOTO Model LT308_____.



CODES/STANDARDS

- Meets and exceeds ASME A112.19.2/CSA B45.1,
- Certifications: IAPMO(cUPC), State of Massachusetts, City of Los Angeles, and others
- Meets ADA, TAS, ICC/ANSI A117.1 and CSA B651
- Code compliance: UPC, IPC, NSPC, NPC Canada, and others



LT308

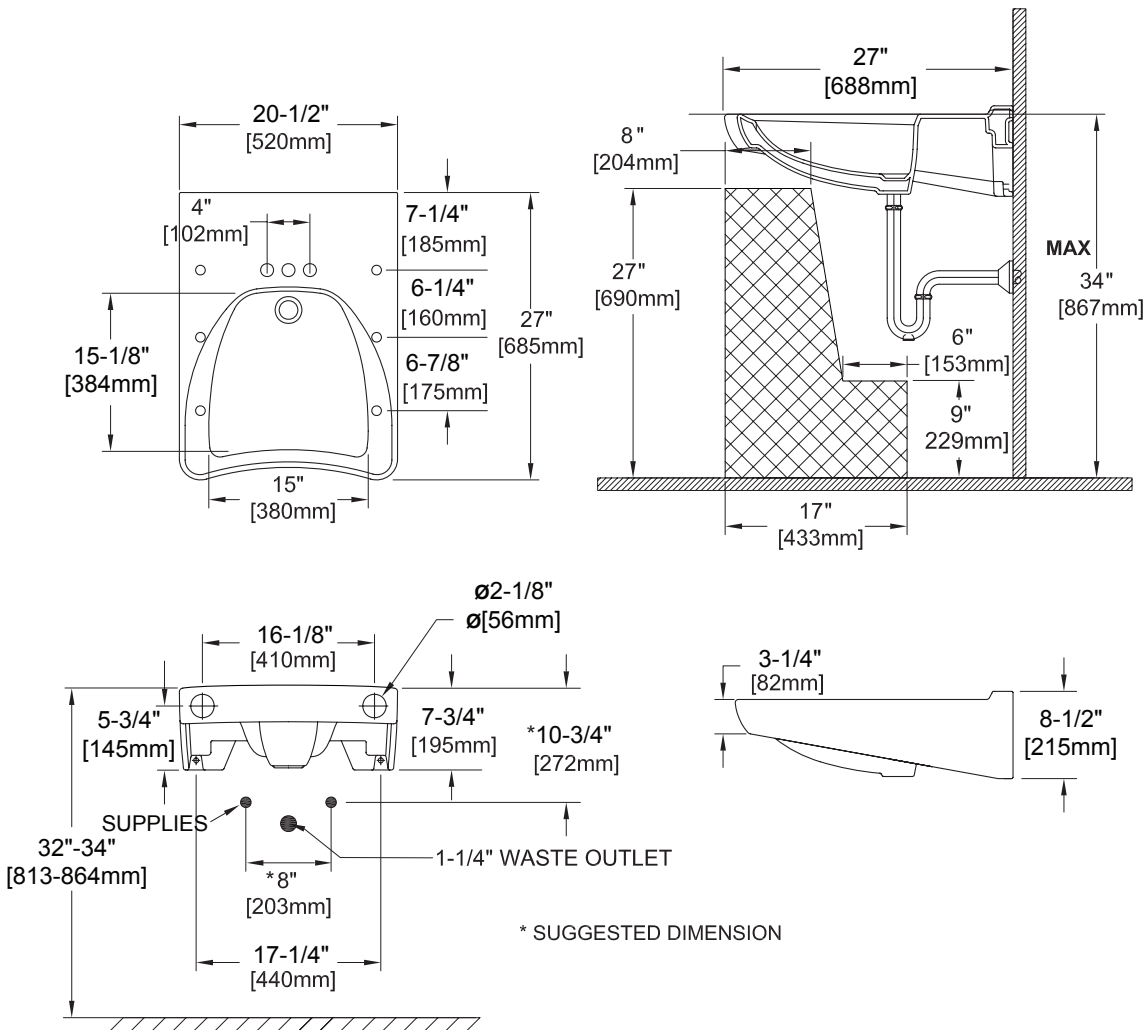
Wheelchair Users Lavatory

SPECIFICATIONS

- Waste 1-1/4" O.D.
- Size 20-1/2"W x 27"D
- Basin 15-1/8"W x 14-3/4"D
- Warranty One Year Limited Warranty
- Material Vitreous china
- Shipping Weight LT308/LT308.4/LT308.11
56 lbs.
- Shipping Dimensions LT308/LT308.4/LT308.11
29-1/8"L x 22-7/8"W x
10-5/8"H

INSTALLATION NOTES

TOTO recommends the use of Jay R. Smith 0700 (- 27 - M31) (Concealed Arms) or equal.



TOTO

These dimensions and specifications are subject to change without notice