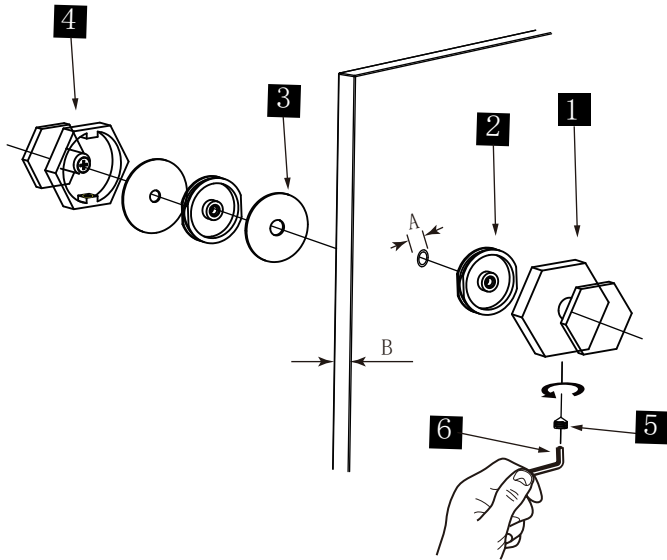


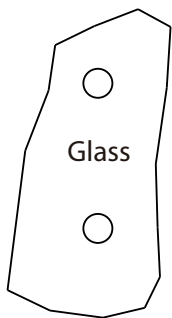
PISA COLLECTION

DOUBLE SDH KNOB

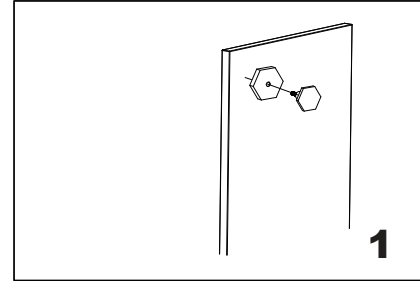
3427502



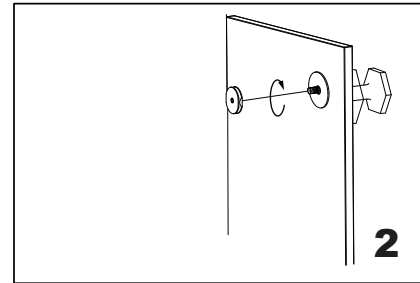
- 1. Knob-A x 1
- 2. Fixing Bracket x 2
- 3. Clear Gasket x 2
- 4. Knob-B x 1
- 5. Set Screw M5 x 1
- 6. Allen Key 2.5mm x 1



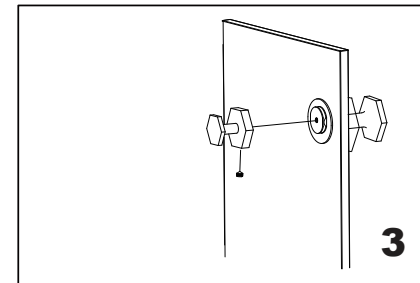
GLASS INFO		
A	3/8"(10mm)	Glass Hole Diameter
B	6-12mm	Glass Thickness



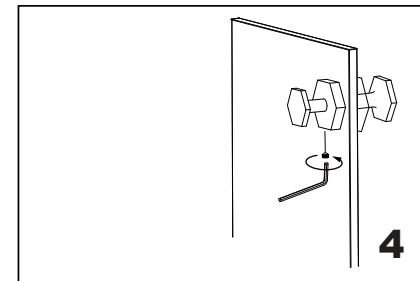
Install the knob-A (bolt) through the glass hole, make sure the rubber gaskets are between knob&glass.



Screw in the fixing bracket into the knob-A bolt.



Add the knob-B on the fixing bracket, make sure the set screw hole in the bottom.



Fix the set screw on the knob-B, tighten it to avoid loose from fixing brackets.