

CRYST RAMA



1958

95 Cantiague Rock Road, Westbury NY 11590

ph:516.931.9090 fax: 516. 931.1254

info@crystorama.com www.crystorama.com

MODEL#:5116-CL-MWP ASSEMBLY AND DRESSING INSTRUCTIONS

WARNING:

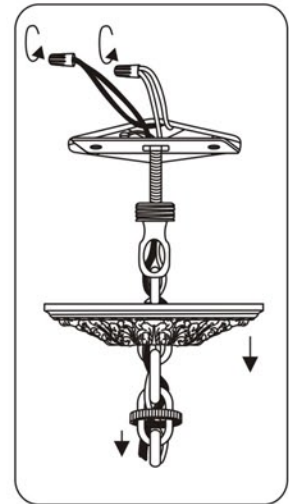
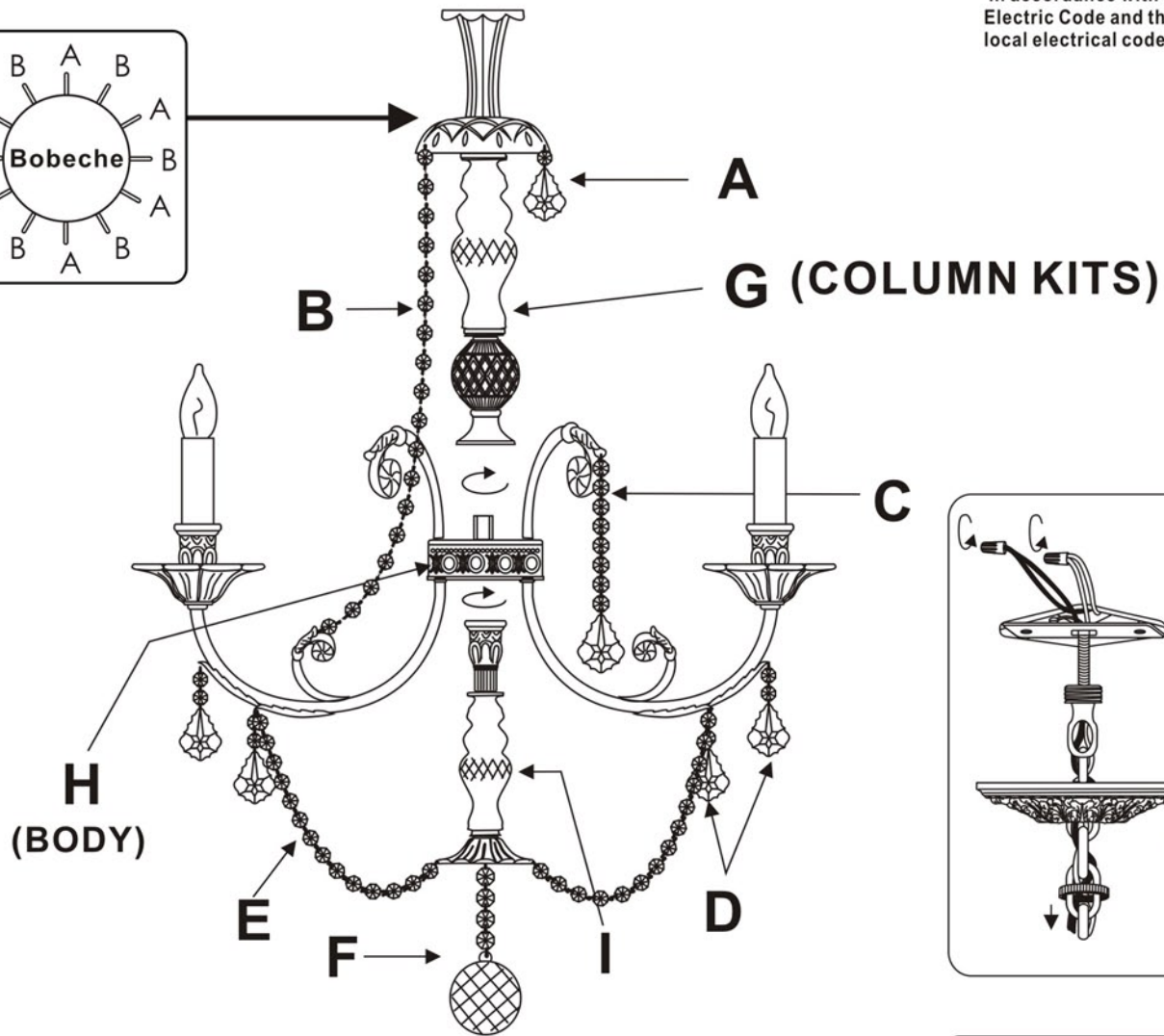
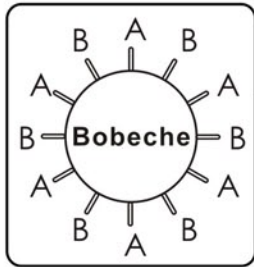



Electrical Danger





Turn Power Off


All electrical components must be installed by a licensed electrician in accordance with the National Electric Code and the appropriate local electrical codes.



A=  (20/62-2.5"+1 Jewel)*6pcs (Every other pin hole.)

B=  (19 Jewels Strand)*6pcs (Every other pin hole.)

C=  (20/75-3" + 8 Jewels)*6pcs

D=  (20/75-3" + 2 Jewels)*12pcs

E=  (16 Jewels Strand)*6pcs

F=  (1x40mm Ball + 6 Jewels)*1pc



You will need 6 - Cand.Bulb
40 Watts Recommended
60 Watts Max
Bulb not included.

ASSEMBLY STEPS:

1)G —————> H

2)I —————> H

3)A.B.C.D.E.F —————> H