

SO#139695-AM
 (20) 4 HOLE
 SQUARES in SAQ

CRYST RAMA



1958

95 Cantiague Rock Road, Westbury NY 11590
 ph:516.931.9090 fax: 516. 931.1254
 info@crystorama.com www.crystorama.com

MODEL#: 4455 ASSEMBLY AND DRESSING INSTRUCTIONS

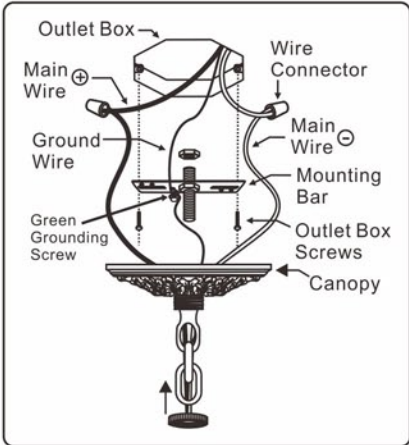
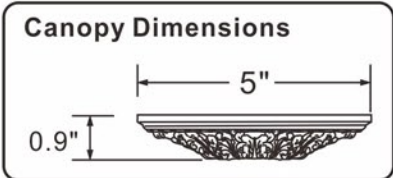
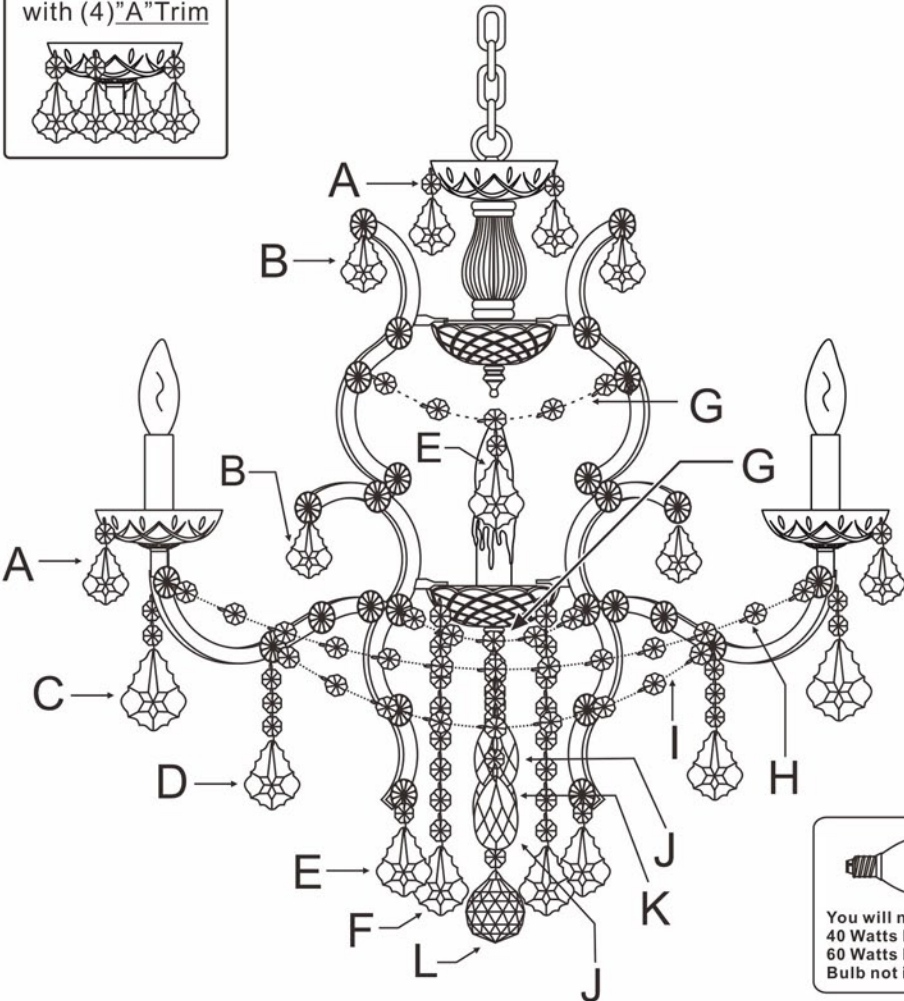
WARNING:


Electrical Danger Turn Power Off

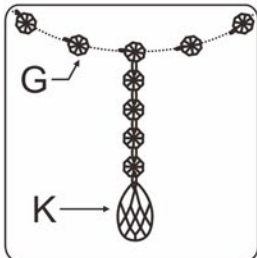
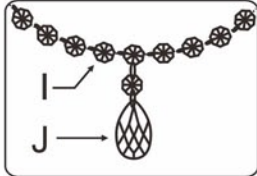
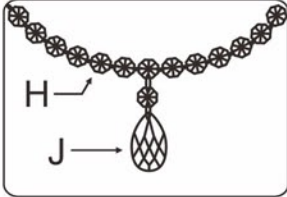
All electrical components must be installed by a licensed electrician in accordance with the National Electric Code and the appropriate local electrical codes.






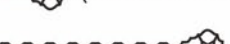
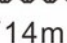


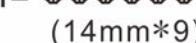




1 Bobeche with (4)"A" Trim




 You will need 6 - Cand.Bulb
 40 Watts Recommended
 60 Watts Max
 Bulb not included.



- A=  (14mm+50mm)*25sets
- B=  50mm*10sets
- C=  (14mm*2+76mm)*5sets
- D=  (14mm*3+63mm)*5sets
- E=  (14mm+63mm)*10pc
- F=  (14mm*8+63mm)*5sets
- G=  (14mm*5)*10sets
- H=  (14mm*13)*5sets
- I=  (14mm*9)*5sets
- J=  (14mm+50mm)*10sets
- K=  (14mm*4+50mm)*5sets
- L=  (14mm*7+40mm)*1pc